



Company Turns LiDAR on Its Head

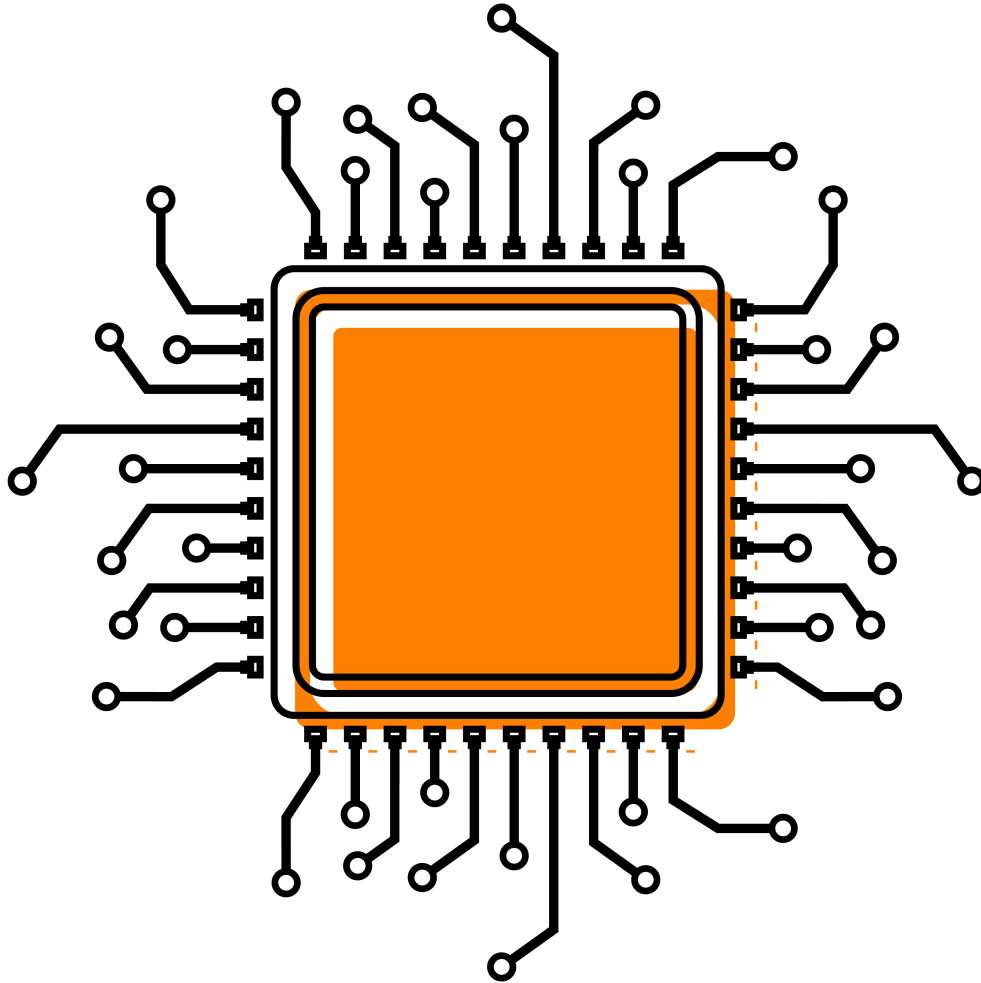
IRD Glass creates all the [components](#) that are essential to the function of LiDAR devices — entrance windows, optical filter substrates, beamsplitters and precision optical mirrors.

The technology for LiDAR was first developed by NASA and used on the Apollo 15 mission to map the surface of the moon. Now it has become the primary means for robots and autonomous vehicles to sense the world around them.

One of the primary constraints that has held LiDAR back from broader application is the large size of the devices — they're typically the size of a softball.

But that may be changing.

See why in our blog [LiDAR System That Fits on the Head of a Pin](#)



About IRD Glass

For over 37 years, IRD Glass has done things that virtually no one else has with precision glass and ceramics.

Ready to order? [Start Your Quote](#)

RECENT BLOG

APOLLO 11 LEFT A LASER DEVICE ON THE MOON 50 YEARS AGO...IT STILL WORKS



A laser ranging retroreflector, a special kind of mirror that always reflects an incoming light beam back in the direction it came from, was placed on the lunar surface fifty years ago by the crew of Apollo 11, Neil Armstrong and Buzz Aldrin, close to the end of their six-hour jaunt on the surface of the moon.

[Read more](#)



David Petersen



IRD would like to introduce David Petersen, one of our Machine Operators and multi-taskers. David has been with IRD since 2014.

David works in conjunction with a couple different cells; our Gyro cell and the Laser Optics cell. David is our go-to expert on the water jet equipment, but also operates many other CNC and manual machines. He is always willing to lend a hand where one is needed.

Coming from a big family of 7 brothers and sisters, he decided to put down roots in Litchfield, enjoying time with his 2 grandsons Edwin and Ayden and grand-daughter Alisha.

Outside of work, David enjoys the challenge of repairing vehicles and finds time to relax fishing in the local lakes hoping to bring home a big one.

Thanks for all you do for IRD, David!



When one door closes, another one opens. Other than that it's a pretty good car.

I like a woman with a head on her shoulders. I hate necks.

I rang work and I said "I can't come in today, I have a wee cough."

The boss said "You have a wee cough?"

I said "Wow, thanks boss. See you next Wednesday!"

CONTACT US | 320.693.7217



**810 E. Saint Paul St., Litchfield, MN 55355
320-693-7217 | www.irdglass.com**



**428 Geneva Road, Alexandria, MN 56308
320-759-2216 | www.irdceramics.com**

Copyright © 2019 | [IRD Glass](http://www.irdglass.com) | *All rights reserved*